



Model 553X-Series Assemblies, Card Kits, and Accessories

A host of optional assemblies, card kits, and accessories can be added on to the Models 5532, 5534, and 5536 Announcer's Consoles. These allow a range of specialized applications to be supported. Please contact the factory for assistance in achieving your specific implementation.

- **6-Pin Headset Connector Assembly** (Order Code: 13595)

Allows a technician to add a 6-pin female XLR connector (Switchcraft® pin arrangement) to Model 553X-Series Announcer's Consoles. Provides support for headsets that use a 6-pin plug for mic and dual earpiece connections. Installs in one of the back-panel spare-connector locations.



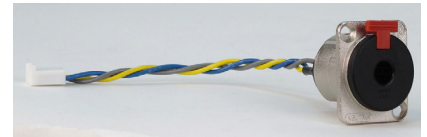
- **7-Pin Headset Connector Assembly** (Order Code: 13561)

Allows a technician to add a 7-pin female XLR connector to Model 553X-Series Announcer's Consoles. Provides support for headsets that use a 7-pin plug for mic and dual earpiece connections. Installs in one of the back-panel spare-connector locations.



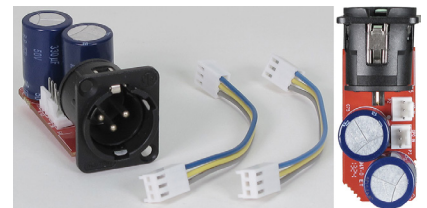
- **3-Conductor 1/4-Inch Connector Assembly** (Order Code: 31208)

Allows a technician to add a second 3-conductor 1/4-inch jack to Model 553X-Series Announcer's Consoles. Provides support for headphones that use standard "stereo" (tip/ring/sleeve) 1/4-inch plugs. Utilizes Neutrik® D-series locking connector. Installs in one of the back-panel spare-connector locations.



- **Direct Microphone Output Card Kit** (Order Code: 32669)

Allows a technician to add a direct microphone output to Model 553X-Series Announcer's Consoles. Installs in one of the back-panel spare-connector locations. The card features a 3-pin male XLR connector. Each kit includes card, interface cables, and hardware.



- **3-Pin Female XLR Connector Card Kit** (Order Code: 31201)

Allows a technician to add a "mult" or special-function connector to Model 553X-Series Announcer's Consoles. Installs in one of the back-panel spare-connector locations. The card features a 3-pin female XLR connector and two 3-pin headers. Each kit includes card, interface cable, and hardware.



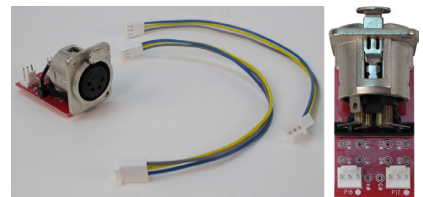
- **3-Pin Male XLR Connector Card Kit** (Order Code: 31202)

Allows a technician to add a "mult" or special-function connector to Model 553X-Series Announcer's Consoles. Installs in one of the back-panel spare-connector locations. The card features a 3-pin male XLR connector and two 3-pin headers. Each kit includes card, interface cable, and hardware.



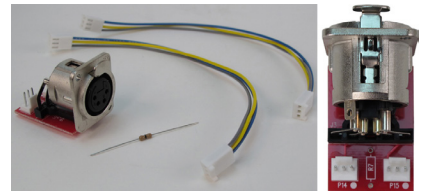
- **4-Pin Female XLR Connector Card Kit (Order Code: 31206)**

Allows a technician to add a special-function connector to Model 553X-Series Announcer's Consoles. Installs in one of the back-panel spare-connector locations. The card features a 4-pin female XLR connector. Each kit includes card, interface cables, and hardware.



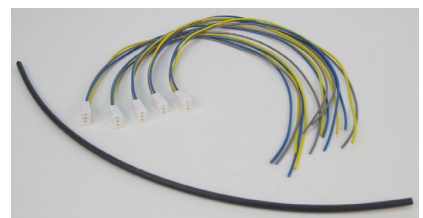
- **Remote Switch Inputs Card Kit (Order Code: 31205)**

Allows a technician to add a connector to provide access to the remote switch inputs of Model 553X-Series Announcer's Consoles. Installs in one of the back-panel spare-connector locations. The card features a 4-pin female XLR connector. Each kit includes card, interface cables, and hardware.



- **Interface Cable Kit (Order Code: 31087)**

Simplifies the process of adding additional XLR connectors or implementing custom functions to Model 553X-Series Announcer's Consoles. The interface cable consists of a 3-position connector with associated 12-inch-long interconnecting wires. A 3-position connector mates directly with "headers" located on announcer console circuit board assemblies. Each kit includes five cable assemblies and one length of heat-shrinkable tubing.



Studio Technologies, Inc.

Skokie, Illinois USA

© by Studio Technologies, Inc., July 2025

studio-tech.com