

Model 352A Talk Station

User Guide

Issue 1, July 2024

This User Guide is applicable for serial numbers M352A-00151 and later with Application Firmware version 1.00 and later and STcontroller software application version 4.01.03 and later

Copyright © 2024 by Studio Technologies, Inc., all rights reserved
studio-tech.com

This page intentionally left blank.

Table of Contents

Revision History	4
Introduction	5
Getting Started	8
Dante Configuration	10
Model 352A Configuration.....	11
Preamble Audio Files	20
Operation	22
Technical Notes.....	25
Specifications	28
Appendix A—STcontroller Default Configuration Values	30

Revision History

Issue 1, July 2024:

- Initial release.

Introduction

The Model 352A Talk Station is a unique product intended to support a variety of voice paging, background music, audio-file playback, broadcast talent cueing (IFB), and general-audio applications. The unit supplies two “talk” channels that can be individually configured to match the needs of an application. A monitor section allows one of two Dante® receiver (input) channels to be routed as desired to a connected amplifier or amplified speaker.

The Model 352A supports Dante audio-over-Ethernet digital media technology with AES67 compatibility for integration into contemporary applications. In addition, the unit is compatible with the Dante Domain Manager™ (DDM) software application.

Voice audio is supplied by way of a gooseneck microphone, purchased separately, which is attached to the connector/threaded bushing combination that is located on the front of the Model 352A. (Using the Studio Technologies’ GME-3-12 Gooseneck Microphone is highly recommended.) Two audio sources or “messages,” up to 40 seconds each in length, are stored in non-volatile memory within the Model 352A. These two audio sources, saved in the common 16-bit monoaural WAV format, can be easily updated by way of a standard USB flash drive. The audio files can contain whatever “pre-page” (preamble) audio signals that are desired to support an application. They could be the sound of natural bells or chimes, an “electronically created” audio sequence, or a voice message. By using WAV files, the desired sources can be created outside of the Model 352A and then easily loaded for use. Configuration choices determine how and when the preamble audio files will be played.

The Model 352A is extremely simple to deploy, is “pro” quality throughout, and provides an intuitive user experience. The Model 352A’s audio quality is excellent, with low distortion, low noise, and ample headroom. Careful circuit design and rugged components ensure long, reliable operation. Only a Power-over-Ethernet (PoE) connection and attachment of a gooseneck microphone are required for operation. If desired, the analog monitor output can be connected to the input of an associated device. Two “custom” WAV audio files can be loaded by way of a USB flash drive.

Model 352A operating features are configured using the STcontroller software application. An extensive set



Figure 1. Model 352A Talk Station front and back views

of parameters allows the unit’s functions to be tailored to meet the needs of a myriad of applications. STcontroller is a fast and simple means of confirming and revising the unit’s operating parameters. The Model 352A is housed in a compact, rugged steel enclosure that’s intended for table-top use. Its small size makes it ideal for applications in space-constrained locations.

Applications

The Model 352A is ideal for creating a single- or dual-channel voice paging application. A signal processor or secondary device would not be required for full-featured deployments. Support for other applications abound. For theater or live-event spaces the Model 352A can be a complete 2-channel solution for routing background audio along with voice paging and preamble audio capability. Pre-recorded “tones” or “chimes” can be configured to play prior to voice audio being presented on one or both of the outputs.

Model 352A TALK STATION



Figure 2. Model 352A Talk Station shown with optional GME-3-12 Gooseneck Microphone

The unit could be conveniently located in a box office, manager's office, or back stage location.

More sophisticated applications can also be supported. A Model 352A function allows high-frequency "call" audio signals present in a Dante receiver (input) channel to be detected and displayed in the LED indicators that are associated with a "talk" pushbutton switch. This allows users to observe the on or off status of call signals that may be associated with intercom audio channels. In addition, this function can be used to display when a channel is active. This allows multiple Model 352A units to be deployed in a single application, with each unit displaying the talk status of all the others. A configuration option allows an associated pushbutton switch to be disabled whenever talk activity is taking place in other units. This feature will help prevent multiple users from simultaneously activating a specific talk function.

Broadcast applications can utilize the Model 352A to create a simple 2-channel talent cue (IFB) master station. Program audio sources can be routed to two of the unit's Dante receiver (input) channels and then interrupted with gooseneck microphone audio as desired.

Deployment of Dante applications could benefit from the unit's ability to store and playback WAV audio files. Test messages could be created in WAV format and then loaded into the Model 352A for continuous playback during system commissioning.

Security or management personnel can use the Model 352A as a combination voice paging console and monitor resource. Audio from the gooseneck microphone can be routed to either or both of Dante transmitter (output) channels. The monitor section allows either of the two Dante receiver (input) sources to be monitored by way of a connected amplifier or amplified speaker. Both analog and Dante monitor outputs are provided.

The range of resources provided by the Model 352A also makes it suitable for use in many other applications. It's designed to support the needs of varied applications across a wide range of audio system designs. The unit is intended to provide a "palette" of resources that meet real-world needs, allowing great things to be accomplished rather than presenting limitations that dictate what can and can't be done.

Setup and Operation

Set up, configuration, and operation of the Model 352A are simple. An RJ45 jack is used to interconnect the unit's Ethernet interface with a standard twisted-pair Ethernet port associated with a PoE-enabled network switch. This connection provides both power and bidirectional digital audio. A gooseneck microphone is attached to the Model 352A using the front-panel 3-conductor ¼-inch jack with integrated threaded bushing. The Studio Technologies' GME-3-12 Gooseneck Microphone is available as an option and will perform very well with the Model 352A.

The monitor output (available in both analog and Dante digital formats) can assist users in confirming system operation. A 3-pin male XLR connector provides access to the analog monitor output. This would typically be connected to the analog input on an amplified loudspeaker. Amplified loudspeakers are also available with a Dante digital audio interface. One or two "custom" preamble audio files can be created and loaded into the Model 352A. They utilize the common WAV file format supported by many personal computer applications. The STcontroller software application is used to configure the wide range of Model 352A operating parameters. This allows the unit's performance to be optimized to meet the needs of specific applications.

The user is presented with three pushbutton switches and a push-in/push-out rotary level potentiometer. Two of the pushbutton switches are lighted with

dual-color LEDs to represent the operating status of the unit's talk channels.

Ethernet Data and PoE

The Model 352A connects to a local area network (LAN) by way of a 100 Mb/s twisted-pair Ethernet interface. The unit's physical 100BASE-TX interconnection is made by way of a Neutrik® etherCON® RJ45 jack. While compatible with standard RJ45 plugs, an etherCON CAT5-compatible plug allows a ruggedized and locking interconnection for harsh or high-reliability environments. The Model 352A's operating power is provided by way of the Ethernet interface using the 802.3af Power-over-Ethernet (PoE) standard. This allows fast and efficient interconnection with an associated data network. To support PoE power management, the Model 352A's PoE interface enumerates (reports) to the power sourcing equipment (PSE) that it's a class 1 (very low power) device.

Dante Audio-over-Ethernet

Audio data is sent to and received from the Model 352A using the Dante audio-over-Ethernet media networking technology. As a Dante-compliant device, the Model 352A's three Dante transmitter (output) channels and four Dante receiver (input) channels can be assigned (routed or "subscribed") to other devices using the Dante Controller software application. The Dante transmitter (output) and receiver (input) channels are limited to supporting four Dante flows, two in each direction. The digital audio's bit depth is up to 32 with a sampling rate of 48 kHz. Two bi-color LEDs provide an indication of the Dante connection status. An additional LED displays the status of the associated Ethernet connection.

The Model 352A is compatible with the AES67 interoperability standard. When configured in Dante Controller to support AES67, the unit's Dante transmitter (output) channels will function in multicast; unicast is not supported. In addition, the Model 352A is compatible with the Dante Domain Manager (DDM) software application.

Audio Quality

The Model 352A provides excellent audio performance. A low-noise, wide dynamic-range microphone preamplifier and associated voltage-controlled-amplifier (VCA) dynamics controller (compressor) ensures that gooseneck microphone audio

quality is preserved while minimizing the chance of signal overload. The output of the microphone preamp and compressor is routed to an analog-to-digital conversion (ADC) section that supports a sampling rate of 48 kHz with a bit depth of up to 32.

As previously discussed, the Model 352A can store and replay two audio files. These uncompressed PCM audio signals utilize the high-quality 16-bit, monaural, WAV format.

Audio sources can arrive in the Model 352A by way of four Dante receiver (input) channels. The supported sampling rate is 48 kHz with a bit depth of up to 32. These signals pass into the Model 352A's 32-bit microcontroller integrated circuit and can be used as part of monitor, background music, or talent cue (IFB) functions. The source selected for the monitor output is sent to both a Dante transmitter (output) channel and a high-performance digital-to-analog (DAC) integrated-circuit converter. The output of the DAC is then connected to a robust balanced (differential) analog output circuit. This analog output is protected from damage should it be accidentally connected to low-voltage DC, ESD ("static"), or other potentially damaging transients.

Depending on the unit's configuration and operating states, the audio content of the two Dante talk transmitter (output) channels will consist of a combination of gooseneck microphone, WAV audio file, and Dante program receiver (input) sources. The signals remain in the digital domain and are routed through the 32-bit logic circuitry and on to the Dante interface section where they are packetized and prepared for transport over Ethernet.

Configuration Flexibility

The Model 352A can easily be configured to meet the needs of many specific applications and user preferences. All configuration choices are performed using the STcontroller software application. Versions of STcontroller are available to support the WinOS® and macOS® operating systems. Selectable configurable parameters include microphone preamplifier gain, WAV file level trim, LED indicator intensity and actions, and monitor output source selection and operation. In addition, both of the talk functions can be optimized from numerous configuration choices. These choices allow the unit to be configured to support voice page, talent cueing (IFB), and other specialized applications.

As previously described, the functions associated with the two talk pushbutton switches and their Dante transmitter (output) channels can be individually configured. As an example, for a voice page application one of the talk channels might be configured to utilize a program music source and play, before the microphone is active, a pre-page message. The second talk channel might be used as a voice-page output with no background music or pre-page audio.

While a range of choices is available, for voice-pages applications the two talk pushbutton switches would typically be configured to provide a momentary (push to activate) function. Red and green LEDs are associated with the pushbutton switches. When lit singly, the LEDs will provide a red or green indication. When both LEDs are lit simultaneously, they will provide an orange indication. A configuration choice allows selection of how the LEDs will light under various operating conditions. This capability is provided to assist users who have trouble observing the differences between colors, typically issues differentiating between red and green. A person experiencing a “color blindness” condition is not uncommon in men and can make effective use of some electronic equipment difficult. The Model 352A’s ability to control the talk pushbutton switches’ colors can also be useful for supporting international applications where compliance to specific regulatory requirements is required. This may dictate which LED color is associated with a function being “on” and which color is associated with a function being “off.”

The two program and two monitor Dante receiver (input) audio sources and the way in which they are assigned to the talk and monitor outputs can be configured. Unique choices allow a number of audio monitoring situations to be implemented. Whether for use in voice paging, talent cueing (IFB), or monitoring applications, the Model 352A should be able to achieve the desired configuration. Several special functions allow the WAV files and gooseneck microphone audio to be routed to the analog and Dante monitor outputs. Configured using STcontroller, these functions can allow a user to hear confirmation audio related to the unit’s real-time operation.

Future Capabilities and Firmware Updating

The Model 352A was designed so that its capabilities and performance can be enhanced in the future. The unit implements a USB host function which allows the application firmware (embedded software) to be updated using a standard USB flash drive. And, as previously discussed, the USB receptacle is also used to load WAV audio files that can be stored on the same USB flash drive. The Model 352A uses the Audinate UltimoX4™ integrated circuit to implement its Dante interface. The firmware in this integrated circuit can be updated via the Ethernet connection, helping to ensure that the unit’s capabilities remain up to date.

Getting Started

What’s Included

Included in the shipping carton is a Model 352A Talk Station unit along with instructions on how to obtain an electronic copy of this guide. As the Model 352A is Power-over-Ethernet (PoE) powered, no external power source is provided. In almost all cases, a microphone, supplied separately, will be installed on the unit. Studio Technologies recommends using its GME-3-12 Gooseneck Microphone which will provide excellent performance. The GME-3-12 is purchased separately and will be shipped in a separate carton.

Connections

In this section, signal interconnections will be made to the connectors located on the back panel of the Model 352A. A gooseneck microphone will, in most cases, be connected to the 1/4-inch jack assembly located on the front panel. One Ethernet connection will be made using either a standard RJ45 patch cable or an etherCON CAT5-compatible protected RJ45 plug. The unit’s Ethernet interface requires connection of a signal that supports Power-over-Ethernet (PoE). In most cases, an electret-powered gooseneck microphone that has an integrated 3-conductor 1/4-inch plug will be connected to the jack assembly located on the front of the Model 352A’s enclosure. For known excellent performance, it’s recommended that a Studio Technologies’ GME-3-12 Gooseneck Microphone be utilized. The analog monitor output, located on the back of the Model 352A’s enclosure, is accessible by way of a 3-pin male XLR connector. Some applications may take advantage of this resource,

typically used for supporting a local monitor loud-speaker with an analog input.

Ethernet Connection

A 100BASE-TX Ethernet (100 Mb/s) connection that also supports Power-over-Ethernet (PoE) is required for Model 352A operation. This single connection will provide both the Ethernet data interface and power for the Model 352A's circuitry. The Ethernet connection is made by way of a Neutrik etherCON CAT5-compatible protected RJ45 jack that is located on the back of the Model 352A's enclosure. This ruggedized and locking RJ45 jack allows connection of an Ethernet signal by way of either a standard RJ45 plug or a cable-mounted etherCON CAT5-compatible plug. The Model 352A's Ethernet interface supports auto MDI/MDI-X such that a crossover cable is never required. The Model 352A's Ethernet connection enumerates itself as a class 1 device. As such, a PoE power-sourcing-equipment (PSE) port is required to supply a modest 3.84 watts maximum of power.

Gooseneck Microphone

A mechanical assembly that combines a threaded bushing with a 3-conductor 1/4-inch jack is incorporated into the front of the Model 352A's enclosure. This interface is commonly utilized on professional intercom equipment, allowing electrical and mechanical attachment of a compatible gooseneck microphone. It's recommended that the excellent-quality Studio Technologies' GME-3-12 Gooseneck Microphone be utilized. Having an overall length of 12 inches, this unidirectional, electret microphone was designed specifically to maximize voice reproduction in intercom, voice paging, and related applications. To minimize the impact of breath noise, a foam windscreen is included with each GME-3-12.

From the factory, a plastic hole plug is pressed into the Model 352A's gooseneck bushing. This protects the connector and internal circuitry from having undesirable material such as dust, dirt, or foreign objects enter the unit. The plastic plug should be removed and stored prior to the gooseneck microphone being installed. Typically, a tool isn't required to lift the edge of the hole plug from the bushing; the hole plug can be removed using one's fingernail. Once the plastic hole plug is free of the bushing, a compatible gooseneck microphone can be inserted and secured using the threaded interconnect. Tighten the microphone to the bushing by hand, turning it in the clockwise direction.

Hand-tighten it until a secure connection has been made. Do not use a tool to tighten the microphone into the bushing!

The two main requirements for a compatible gooseneck microphone are that it contain an electret microphone capsule and that it interconnects by way of a 3-conductor 1/4-inch plug with an integrated threaded bushing with a pitch of 7/16-20 UNF. The RTS®/Telex®/Bosch® MCP-90-series of gooseneck microphones should be directly compatible with the Model 352A and will perform acceptably. Gooseneck microphones from other sources such as Clear-Com® may also be utilized. But known-excellent performance would be obtained using the aforementioned Studio Technologies' GME-3-12.

The 3-conductor 1/4-inch jack associated with the Model 352A's gooseneck bushing has a tip connection that is used for microphone audio as well as to supplying the low-voltage DC needed for powering an electret microphone. (The power source is 3.3 volts DC in series with a 2.49 k (2490) ohm resistor.) The jack's ring connection is used for the microphone's low signal (audio and DC). The sleeve connection is chassis ground and isn't used as a signal conductor. (Although it does play an important role in shielding the microphone assembly.) Within the Model 352A's circuitry the ring and sleeve connections are connected together as well as being connected ("tied") to the chassis.

The Model 352A's gooseneck bushing includes a hex-head socket set screw with a thread pitch of 4-40 UNC. This allows the gooseneck microphone to be secured into the bushing by simply tightening the set screw against the microphone using a 5/64-inch hex driver. In many cases, especially in applications where the Model 352A will be moved from venue-to-venue, it may not be optimal for a hex screw to be utilized. This is because the gooseneck microphone may need to be removed and stored for transit. In this case, the set screw should be removed and saved for possible future use.

It's possible that a microphone won't be needed. This would be in the rare case where the Model 352A's ability to play audio files is the only function that is required. In this odd but possible case, a gooseneck microphone would not be required and the plastic hole plug should remain in place.

Analog Monitor Output

The Model 352A's analog monitor output, accessible by way of a 3-pin male XLR connector located on the back panel, is designed to connect to a variety of devices. It's expected that in some situations the analog monitor output will be utilized for local audio monitoring. The simplest means to accomplish this is to use a loudspeaker with an analog input and an internal amplifier, such as a model from the popular Fostex® 6301-series. Other applications may connect the Model 352A's analog monitor output to an input on an audio power amplifier associated with a loudspeaker.

The Model 352A's analog monitor output is line-level, electronically balanced, and capacitor coupled. It can correctly interface with balanced or unbalanced loads of 2 k (2000) ohms or greater. A configuration setting in the STcontroller application is used to select how the analog monitor output will function from among three operating modes. In the *Adjustable (Post-Fader)* mode the level of the monitor output will depend on the setting of the front-panel level control. ("Post" indicates that the monitor output will obtain its audio source after ("post") the level control; a level control is also known in the audio world as a "fader.")

When selected for the *Fixed -10 (Pre-Fader)* mode, the analog monitor output will have a fixed nominal level of -10 dBu. In this mode, the nominal output level has been optimized to match the input sensitivity typically found on amplified loudspeakers. Since most amplified loudspeakers contain an integrated level control, the analog monitor output's signal is "pre-fader," that is with no interaction from the Model 352A's level control. In the *Fixed 0 (Pre-Fader)* mode, the analog monitor output has a fixed nominal output level of 0 dBu. This can be useful as a "professional" line-level output for connection with audio routers, intercom systems, audio transport equipment, or a local monitoring system. In both of the fixed modes, the level control on the front of the Model 352A will not impact the level of the analog monitor output. (The audio signal is presented to the analog monitor output circuitry before ("pre") the level control.)

An interface cable prepared for connection to the analog monitor output should use a 3-pin female XLR connector that is wired such that pin 2 is connected as signal + (high), pin 3 as signal - (low), and pin 1 as common/shield. To connect to an unbalanced input use XLR pin 2 as signal + (high) and pin 1 as

low/shield. Pin 3 should be left unconnected. To clarify, for correct unbalanced operation it is important not to connect pin 3 to anything; do not connect pins 1 and 3 together.

Dante Monitor Output

An identical signal is sent to both the analog monitor output and the Dante monitor output. When configured for the *Fixed -10 (Pre-Fader)* mode the nominal level of the Dante monitor output will be -30 dBFS. When configured for the *Fixed 0 (Pre-Fader)* mode the nominal level will be -24 dBFS. In either of these modes the Model 352A's monitor level control will not impact the Dante monitor transmitter (output) channel.

Dante Configuration

For audio to pass to and from the Model 352A requires configuration of several Dante-related parameters. These configuration settings are stored in non-volatile memory within the Model 352A's circuitry. Dante parameter configuration will typically be done with the Dante Controller software application, available for download free of charge at audinate.com. Versions of Dante Controller are available to support the Windows® and macOS® operating systems.

The Model 352A's Dante interface is compatible with the Dante Domain Manager (DDM) software application. Refer to the DDM documentation, also available from Audinate, for details on which Model 352A and related parameters may need to be configured.

Audio Routing

The Model 352A has three Dante transmitter (output) and four Dante receiver (input) channels that are associated with the unit's Dante interface. The transmitter (output) channels must be subscribed (routed) to the desired Dante receiver (input) channels. This achieves routing of the Model 352A's audio output channels to the device (or devices) that will be "listening" to them. In addition, the unit's four Dante receiver (input) channels can be subscribed (routed) with the devices that supply the desired audio signals. These four audio input channels can provide the monitor, talent cue (IFB program or non-interrupt), or background music signals needed for a specific application. Note that within Dante Controller a "subscription" is the term used for routing a transmitter flow (a group of up to four output channels) to a receiver flow (a group of input channels).

In advanced applications, two of the Model 352A's Dante receiver (input) channels can provide "keep alive" signals that impact operation of the unit's two Dante talk transmitter (output) channels. Together they can work with a digital processor unit to create a complete end-to-end solution.

As previously noted, the Model 352A uses an UltimoX4 integrated circuit to implement its Dante functionality. The number of flows associated with this integrated circuit is four; two associated with the three transmitter (output) channels and two associated with the four receiver (input) channels. (A flow can be unicast, multicast, or a combination of the two.) With this small number of flows it's possible that a flow limitation condition could occur. If the Model 352A's three Dante transmitter (output) channels need to be subscribed (routed) to more than two flows (typically two devices) it's possible that an intermediary device, such as the Studio Technologies' Model 5421 or Model 5422A Dante Intercom Audio Engine, can be used to "repeat" the signals and gain many additional flows.

Note that when the AES67 mode has been enabled in the Dante Controller application the Model 352A's Dante transmitter (output) channels will only function in multicast; unicast is not supported.

Unit and Channel Names

The Model 352A has a default Dante device name of **ST-M352A-** and a unique suffix. The suffix identifies the specific Model 352A that is being configured. The suffix's actual alpha and/or numeric characters relate to the MAC address of the unit's UltimoX4 integrated circuit. The three Dante transmitter (output) channels have default names of **Ch1**, **Ch2**, and **Mon**. The four Dante receiver (input) channels have default names of **Mon1**, **Mon2**, **Pgm1**, and **Pgm2**. The term *Mon* is a shorted version of the word Monitor; *Pgm* represents the word Program. Using Dante Controller, the default device and channel names can be revised as appropriate for the specific application.

Device Configuration

The Model 352A supports an audio sample rate of 48 kHz with no pull-up/down options available. The unit's digital audio data is in the form of pulse-code modulation (PCM) samples. Encoding choices within Dante Controller are **PCM 16**, **PCM 24**, and **PCM 32**, but in most cases the selection of PCM 24 would be appropriate. Clocking and device latency parameters

can be adjusted within Dante Controller, if required, but the default values are typically correct.

Network Configuration

Typically, the Model 352A's Dante IP address and related network parameters will be determined automatically using DHCP or, if that's not available, the link-local network protocol. If desired, Dante Controller allows IP address and related network parameters to be manually set to a fixed or static configuration. While this is a more-involved process than simply letting DHCP or link-local "do their thing," if fixed addressing is necessary then this capability is available.

AES67 Configuration – AES67 Mode

Dante Controller allows a Model 352A to be configured for AES67 operation. This requires the AES67 mode to be set for *Enabled*. As previously noted, if AES67 mode is Enabled then the unit's three Dante transmitter (output) channels will use multicast.

Model 352A Clocking Source

While technically the Model 352A can serve as a Leader clock for a Dante network (as can all Dante-enabled devices), in most cases the unit will be configured to receive its timing reference ("sync") from another Dante device. As such, the Dante Controller check box for the Preferred Leader that is associated with the Model 352A would typically not be enabled.

Model 352A Configuration

The STcontroller software application is used to configure the way in which the Model 352A functions. No DIP switch settings or other local actions are used to configure the unit. This makes it imperative that STcontroller be available for convenient use on a personal computer that's connected to the related LAN.

Installing STcontroller

STcontroller is available free of charge on the Studio Technologies' website (studio-tech.com). Versions are available that are compatible with personal computers running selected versions of the Windows and macOS operating systems. If required, download and install STcontroller onto a designated personal computer. This personal computer must be on the same local area network (LAN) and subnet as are being used by the Model 352A units that are to be configured. Immediately after starting the STcontroller application, it will locate all the Studio Technologies' devices that

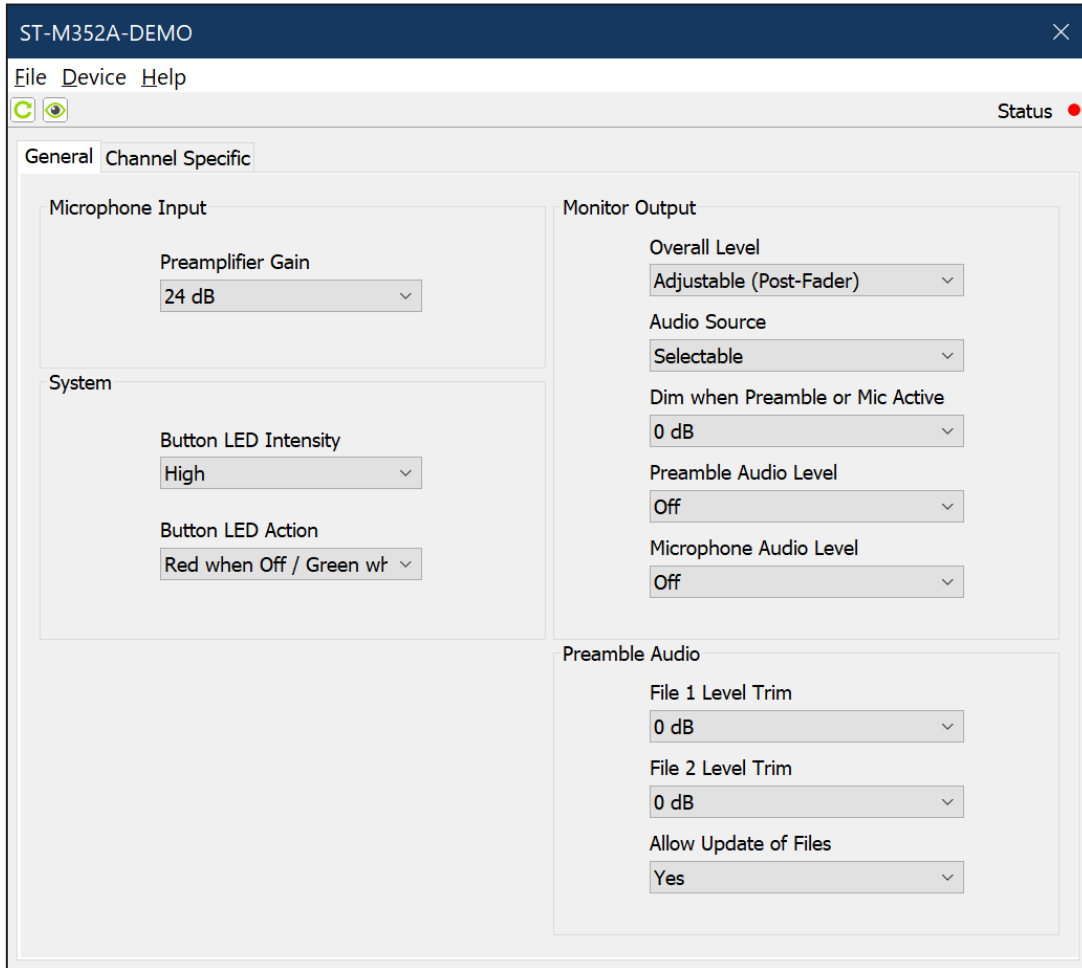
it can control. The one or more Model 352A units that can be configured will appear in the device list.

Use the *Identify* command to allow easy recognition of a specific Model 352A unit. Double-clicking on a device name will cause the associated configuration menu to appear. Review the current configuration and make any changes that are desired.

Changes made using STcontroller will be immediately reflected in the unit's operation; no Model 352A reboot is required. Each time a change is made the two talk pushbutton switches on the Model 352A's front panel will flash orange in a distinctive pattern to indicate that a command from STcontroller has been received.

General Menu Page

The following configuration selections are available in the General menu selections tab:



Microphone Input – Preamplifier Gain

The gain of the preamplifier associated with the gooseneck microphone will operate from among five configurable choices: *12 dB*, *18 dB*, *24 dB*, *30 dB*, and *36 dB*.

The compressor active LED, located on the unit's back panel, can act as a guide when setting the preamplifier gain. The default value of 24 dB will typically be appropriate for use with the Studio Technologies' GME-3-12 Gooseneck Microphone.

When a voice signal at a normal level is presented to the gooseneck microphone the compressor active LED should light intermittently. If, for example, the LED rarely lights and the gain is set to 24 dB, it might be a good idea to change the gain setting to 30 dB or

36 dB. If the compressor LED is lit fully during normal talking and the gain is set for 30 or 36 dB, a change to one of the lower gain values might be warranted.

System – Button LED Intensity

Choices are *Low* and *High*.

Under the top surface of both talk pushbutton switches is a red and a green LED indicator. The LED intensity configuration choice allows the overall intensity of these LEDs, as a group, to be selected. Deciding which choice, low or high, is optimal will typically depend on the amount of ambient light that is present in the area where the Model 352A is located.

System – Button LED Action

Choices are

Red when Off/Green when On

Green when Off/Red when On

Unlit when Off/Green when On

Unlit when Off/Red when On

The action of the red and green LED indicators associated with the two talk pushbutton switches can be configured. (Technically, there are two red and two green LEDs in each of the talk pushbutton switches.) The talk pushbutton switches are configured as a group, both acting in the same manner. The third and fourth choices were specifically provided to support users who have limitations in their ability to discern between two colors (“color blindness”).

Red when Off/Green when On: The LEDs in each talk pushbutton switch will light red when its associated function is off (not active). The LEDs in each talk pushbutton switch will light green when its associated function is on (active).

Green when Off/Red when On: The LEDs in each talk pushbutton switch will light green when its associated function is off (not active). The LEDs in each talk pushbutton switch will light red when its associated function is on (active).

Unlit when Off/Green when On: The LEDs in each talk pushbutton switch will not light when its associated function is off (not active). The LEDs in each talk pushbutton switch will light green when its associated function is on (active).

Unlit when Off / Red when On: The LEDs in each talk pushbutton switch will not light when its associated function is off (not active). The LEDs in each talk pushbutton switch will light red when its associated function is on (active).

Monitor Output – Overall Level

Choices are

Fixed –10 (Pre-Fader)

Fixed 0 (Pre-Fader)

Adjustable (Post-Fader)

Fixed –10 (Pre-Fader): When selected, the analog monitor output’s nominal level will be –10 dBu and the Dante monitor output’s nominal level will be –30 dBFS. The level of both outputs will not be

impacted by the front-panel rotary level control. Technically, when *Fixed –10 (Pre-Fader)* is selected, a digital audio signal that arrives in the selected Model 352A monitor Dante receiver (input) channel at –20 dBFS will result in an analog monitor output level of –10 dBu and a digital monitor output level of –30 dBFS.

This setting would be appropriate when either the analog monitor output or the Dante digital monitor output is connected to an amplified speaker which includes input gain and a level control. This configuration also may be appropriate when the input of a Fostex 6301-series amplified loudspeaker is connected to the Model 352A’s analog monitor output or subscribed to the Dante monitor output. In this way, the user is only required to adjust the level control on the associated amplified loudspeaker.

Fixed 0 (Pre-Fader): If selected, the analog monitor output’s nominal level will be 0 dBu and the Dante monitor output’s nominal level will be –24 dBFS. (Again, referenced to a Dante input signal with a level of –20 dBFS.) Neither output will be impacted by the Model 352A’s front-panel rotary level control. This setting would be appropriate when the analog monitor output or the Dante monitor output signals are being used with equipment that requires a higher than nominal line-level signal.

Adjustable (Post-Fader): When this mode is selected, the rotary level control will impact the level of the analog monitor output and the Dante monitor output. The rotary level control, with a push-in/push-out knob action, is located on the front of the Model 352A’s enclosure. In this mode, when the rotary level control is adjusted to its fully clockwise (CW) position the analog monitor output level will be +4 dBu and the Dante monitor output level will be –20 dBFS. (This is applicable when the associated Dante input signal has a level of –20 dBFS.) The rotary level control will cause an attenuation action on the analog and Dante monitor outputs as the knob is turned in its counterclockwise (CCW) direction. The analog and Dante monitor outputs will be fully muted when the rotary level control is set to its fully counterclockwise (CCW) position.

Monitor Output – Audio Source

Choices are *None*, *Mon 1*, *Mon 2*, and *Selectable*.

This configuration selection relates to the audio source that is associated with the analog and Dante monitor outputs.

None: When selected, the analog and Dante digital monitor outputs will be disabled.

Mon 1 or Mon 2: When selected, the specified Dante receiver (input) channel will be used as the source for both the analog and Dante digital monitor outputs.

Selectable: When selected, this allows the user to choose either of the Dante monitor receiver (input) channels to serve as the source for the analog and Dante digital monitor outputs.

Monitor Output – Dim when Preamble or Mic Active

Choices are *0 dB*, *5 dB*, *10 dB*, *15 dB*, *20 dB*, and *Full Mute*.

This configuration selects the level change that will be made to the analog and Dante monitor outputs when a preamble message and/or talk microphone audio is active. It is provided primarily to prevent audio crosstalk and acoustical feedback that could occur between a connected gooseneck microphone and an adjacent monitor loudspeaker. Selecting *0 dB* would effectively serve to disable this function. (As would be expected, adjusting the level of something by 0 dB will not cause any change to occur.) Selecting *Full Mute* would effectively make this function be a monitor output mute.

Monitor Output – Preamble Audio Level

Choices are *Off*, *Low*, *Medium Low*, *Medium*, *Medium High*, and *High*.

To assist a Model 352A user, it's possible that enabling this function would be useful, sending preamble audio to the analog and Dante monitor outputs, whenever a preamble message is actively being played. This would allow a user to hear the preamble audio over an associated monitor loudspeaker and, if applicable, prepare to make a voice announcement.

Monitor Output – Microphone Audio Level

Choices are *Off*, *Low*, *Medium Low*, *Medium*, *Medium High*, and *High*.

In special circumstances, it's possible that it would be useful to send microphone audio to the analog and Dante monitor outputs whenever a talk function is active. This would allow a user to hear their own voice as a confirmation of what action is occurring. If enabled, the microphone audio signal, when active, would be sent to both the analog and Dante monitor output channels. When configured for *Off*, no microphone audio will be sent to the monitor output channels. The five other choices allow microphone audio to be sent to the monitor outputs at various levels. Note that selecting a level that's too high can result in acoustic feedback between the connected gooseneck microphone and an associated monitor loudspeaker.

Preamble Audio – File 1 Level Trim

Choices are *-12 dB*, *-9 dB*, *-6 dB*, *-3 dB*, *0 dB*, *3 dB*, *6 dB*, *9 dB*, and *12 dB*.

The preamble function allows a stored audio source (in the form of a WAV file) to be sent out the designated Dante transmitter (output) channels. This configuration setting allows the playback level of File 1 to be adjusted ("trimmed") from among nine available choices. (The level of the preamble audio provided in File 1 will be adjusted relative to the microphone audio level.) A negative value indicates that the level of the file will be reduced. Selecting *0 dB* would cause no level change to be made. And a positive selection will cause gain to be added the file.

Preamble Audio – File 2 Level Trim

Choices are *-12 dB*, *-9 dB*, *-6 dB*, *-3 dB*, *0 dB*, *3 dB*, *6 dB*, *9 dB*, and *12 dB*.

These configuration choices function the same as the configuration that applies to File 1.

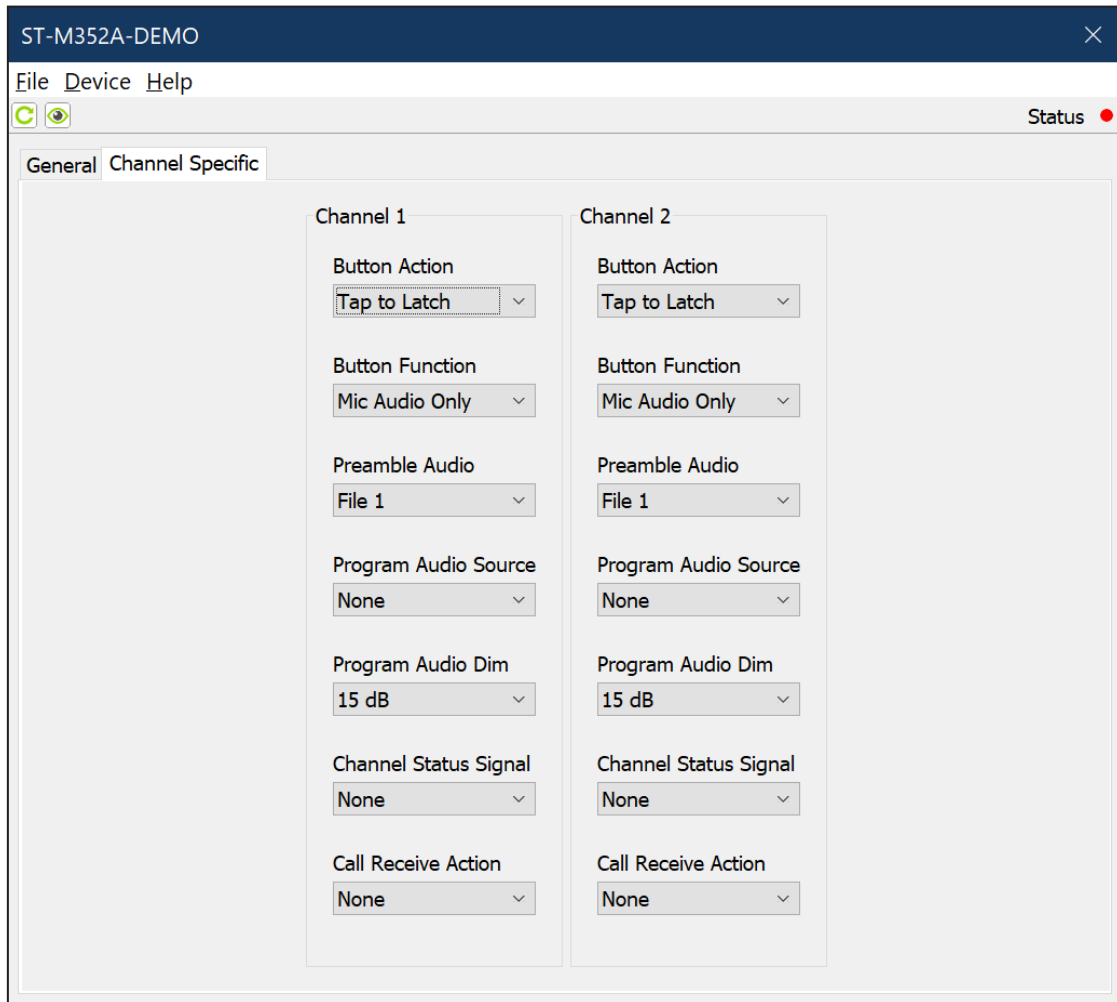
Preamble Audio – Allow Update of Files

Choices are *No* and *Yes*.

A USB flash drive is used to load preamble files into the Model 352A's non-volatile storage. This is a fast and simple means of revising the two audio (WAV) files as desired. A USB Type A receptacle is located on the unit's back panel and is compatible with most commonly available flash drives. This configuration setting determines whether or not the Model 352A will load WAV files that are stored on a USB flash drive. When configured for *No*, the unit will ignore preamble files that are present on a connected USB flash drive. New audio files can only be loaded when the *Yes* configuration choice has been selected.

Channel Specific Menu Page

The following configuration selections apply individually to Channels 1 and 2. They are available in each Channel Specific column:



Button Action

Choices are

Momentary

Tap to Latch

Momentary/Tap to Latch

Disabled

Momentary: If this mode is selected, a button's function will normally be inactive. Whenever the button is pressed its associated function will become active.

Tap to Latch: If this mode is selected, whenever the button is pressed its function will alternate between its active and inactive states. Upon Model 352A power up the button will be in its inactive state.

Momentary/Tap to Latch: This mode is a combination of the Momentary and Tap to Latch modes. It's similar to the way in which pushbutton switches often function on user stations associated with broadcast or production intercom systems. If the button is pressed and held its associated function will become active. It will stay active until the button is released. If the button is "tapped" the status of the function will change, either from inactive-to-active or from active-to-inactive. Upon Model 352A power up, the button will be in its inactive state.

Disabled: In this mode, the button will not perform a function. Pressing it will cause the button's red LED to flash, indicating that it has been disabled.

Button Function

Choices are

Mic Audio Only

Preamble Audio (Play Once), then Mic Audio

Preamble Audio (Play Once), Mix with Mic Audio

Preamble Audio Only (Play Once, Interruptible)

Preamble Audio Only (Play Once, Complete)

Preamble Audio Only (Play Continuous, Interruptible)

Preamble Audio Only (Play Continuous, Complete)

The action that happens when a talk channel's pushbutton switch becomes active will follow this configuration. The seven available modes are unique and warrant a careful review before a selection is made.

Mic Audio Only: In this mode, whenever the channel's pushbutton switch is active microphone audio will be sent out the associated Dante transmitter (output) channel.

Preamble Audio (Play Once), then Mic Audio: In this mode, whenever the channel's pushbutton switch becomes active the selected preamble audio file will be sent to the Dante transmitter (output) channel. After the preamble audio file has played once the microphone audio will become active. Just to clarify, during the time that the preamble file is playing, audio from the microphone will not be sent out the Dante transmitter (output) channel. Only after the preamble file has been played once will the microphone become active.

Preamble Audio (Play Once), Mix with Mic Audio: In this mode, whenever the channel's pushbutton switch becomes active the selected preamble audio file will be sent to the Dante transmitter (output) channel. At the same time microphone audio will become active and mixed (combined) with the preamble audio.

Preamble Audio Only (Play Once, Interruptible): In this mode, when the channel's pushbutton switch becomes active the selected preamble audio file will play once and then stop. Changing the pushbutton switch to its inactive state when the preamble audio file is actively playing will cause it to immediately stop. Microphone audio will never become active.

Preamble Audio Only (Play Once, Complete): In this mode, when the channel's pushbutton switch becomes active the selected preamble audio file will play once and then stop. Changing the pushbutton switch to its inactive state when the preamble audio file is actively

playing will not cause it to stop. The preamble audio file will always completely play once. Microphone audio will never become active.

Preamble Audio Only (Play Continuous, Interruptible): In this mode, when the channel's pushbutton switch becomes active the selected preamble audio file will play continuously. Changing the pushbutton switch to its inactive state when the preamble audio file is actively playing will cause it to immediately stop.

Preamble Audio Only (Play Continuous, Complete): In this mode, when the channel's pushbutton switch becomes active the selected preamble audio file will play continuously. Changing the pushbutton switch to its inactive state when the preamble audio file is actively playing will not cause it to immediately stop. The preamble audio file will play until it ends and only then will it stop.

Preamble Audio Source

Choices are *File 1* and *File 2*.

The Model 352A can store and play two independent audio (WAV) files. These are called preamble audio files and are loaded into the unit using a USB flash drive. This configuration selection determines which of the two files is assigned to a specific pushbutton switch function.

Program Audio Source

Choices are *None*, *Pgm 1*, and *Pgm 2*.

This selection determines which of the Dante program receiver (input) channels will be used as the program audio source for its associated Dante transmitter (output) channel. For some applications, it's possible that a program audio source will not be assigned to a Dante transmitter (output) channel. In this situation, the selection of *None* would be correct. For a typical voice paging application this configuration determines which audio signal would be sent to a paging zone as its background music source. For broadcast applications where talent cue (interrupted foldback or IFB) signals need to be created this setting would determine the IFB program audio source.

A separate configuration setting determines the amount of attenuation that will be applied to the program audio source when the preamble or microphone audio is active.

Program Audio Dim

Choices are *0 dB*, *5 dB*, *10 dB*, *15 dB*, *20 dB*, and *Full Mute*.

This value determines the amount of attenuation (level reduction or “dim”) that will be applied to the selected program audio source when the preamble audio or microphone audio is active on the Dante transmitter (output) channel. Selecting *0 dB* will configure the channel to have no change in program audio level when the preamble or microphone function is active. The preamble and/or microphone audio will simply be combined (added or summed) with the program audio. When *Full Mute* is selected the program audio source will fully attenuate (completely mute) whenever the preamble and/or microphone audio is active. In voice paging applications it would be typical to select *5 dB* or *10 dB* for the program audio dim, reducing but not muting a background music source when the preamble or microphone function is active. In most broadcast applications where a talent cue (interrupt or IFB function) signal is going to be created, a value of *15 dB* would be appropriate.

Channel Status Signal

Choices are:

None

18 kHz Tone when Preamble or Mic Active

20 kHz Tone when Preamble or Mic Active

20 kHz when Inactive, 18 kHz when Preamble or Mic Active

20 kHz when Receiver Channel Active, None when Preamble or Mic Active

16 kHz when Receiver Channel Inactive, 20 kHz when Receiver Channel Active, 18 kHz when Preamble or Mic Active

The Model 352A can be configured to support a number of interesting applications through the generation of high-frequency sine wave audio tones that are added to the Dante transmitter (output) channels. The presence of these tones can be selected such that the status of a Model 352A channel can be communicated to a connected device. These status signals allow the unit to be integrated into a range of local and remote applications. Used in conjunction with the Studio Technologies’ Model 5422A Dante Intercom Audio Engine, it would be simple to create REMI or At-Home functions. Most digital audio processor units can also be programmed to respond to the audio tones.

None: In this mode, no channel status signals (tones) will be added to an associated Dante transmitter (output) channel.

18 kHz Tone when Preamble or Mic Active: In this mode, an 18 kHz sine wave tone will be sent out the associated Dante transmitter (output) channel whenever preamble or microphone audio is active. The sine wave tone will be mixed (combined or summed) with the preamble and/or microphone audio. This function can be useful by providing an “on-air” trigger for functions associated with devices such as the Model 5422A Dante Intercom Audio Engine.

20 kHz Tone when Preamble or Mic Active: Similar to the previous mode, this mode provides a 20 kHz sine wave tone, combined with the preamble or microphone audio, on the associated Dante transmitter (output) channel.

20 kHz when Inactive, 18 kHz when Preamble or Mic Active: In this mode, whenever the associated preamble or microphone audio function is inactive then a 20 kHz tone will be sent out the associated Dante transmitter (output) channel. When the preamble and/or microphone audio function is active an 18 kHz tone will be combined with them and sent out. The 20 kHz serves as a channel “keep alive” signal, indicating that the audio path is actively functioning but that no user audio is present. The way in which this operates harks back to the days of analog 4-wire telephone trunk circuits. An “idle” trunk would have a continuous mid-band tone present to alert personnel that a circuit was “live” and ready to function. When the trunk became active the tone would be removed and voice audio would be connected. In the case of the Model 352A, the 18 kHz tone indicates to connected equipment that active audio content is present on the Dante transmitter (output) path.

20 kHz when Receiver Channel Active, None when Preamble or Mic Active: If a high-frequency tone is present on the Dante program receiver (input) channel then the Model 352A considers this to be a receiver channel active condition. If the receiver channel is active and preamble or microphone audio is not active then a 20 kHz tone is sent out the Dante transmitter (output) channel. If, whether or not a tone is present on the Dante receiver (input) channel, preamble or microphone audio is active then no tone will be sent out the Dante transmitter (output) channel. This choice

will allow a more sophisticated “keep alive” signal to be generated, one that indicates when an associated receiver channel is active.

16 kHz when Receiver Channel Inactive, 20 kHz when Receiver Channel Active, 18 kHz when Preamble or Mic Active: This mode provides three different tones that represent the status of both the Dante program receiver (input) channel and the associated Dante transmitter (output) channel. When the Dante program receiver (input) channel associated with a specific channel doesn't have a high-frequency tone present the Model 352A considers this to be a receiver channel inactive condition. In this case, a 16 kHz sine wave tone is sent out the associated Dante transmitter (output) channel. If a high-frequency tone is present on the Dante program receiver (input) channel then the Model 352A considers this to be a receiver channel active condition. If the receiver channel is active and preamble or microphone audio is not active then a 20 kHz tone is sent out the Dante transmitter (output) channel. If the program receiver channel is active and preamble or microphone audio is active then an 18 kHz tone is sent out the Dante transmitter (output) channel. The applicable tone always combines (mixes or sums) with the other audio signals that are present on the Dante transmitter (output) channel. After some study it's hoped that it will become clear as to why this set of sine wave tone signals would allow an audio processing device to recognize the complete operating status of a Model 352A's program receiver and talk transmitter channel.

Call Receive Action

Choices are

None

Button Lights when Call Received, Button Action

Normal

Button Lights when Call Received, Button Action

Disabled

This function configures the manner in which a Model 352A's talk channel button will light and how the button will operate when a high-frequency audio signal is detected as part of an associated Dante program receiver (input) channel. This was included such that multiple Model 352A units could be deployed in an application, display the active status of each other and, if desired, inhibit button operation.

None: When this mode is selected, the channel's button LEDs will not respond to the presence of a high-frequency signal in its associated Dante program receiver (input) channel. The button action will never be changed from the manner in which it has been configured.

Button Lights when Call Received, Button Action

Normal: When this mode is selected, the channel button's LEDs will flash orange whenever a high-frequency signal is detected in the associated Dante program receiver (input) channel. Operation of the button will continue to follow its configured action.

Button Lights when Call Received, Button Action

Disabled: When this mode is selected, the channel button's LEDs will flash orange whenever a high-frequency signal is detected in the associated Dante program receiver (input) channel. The action of the button will be disabled whenever a high-frequency signal is being detected.

Preamble Audio Files

As previously discussed, two audio “messages,” each up to 40 seconds in length, can be stored in non-volatile memory within the Model 352A. These are referred to as the preamble audio files and are in the 16-bit, 48 kHz sample rate, monoaural WAV format. Configuration choices determine how and when the preamble audio files will be played during Model 352A operation. The preamble audio files within the Model 352A can be easily updated by way of a standard USB flash drive. The preamble audio files can contain whatever audio content is desired to best support specific applications. The content could consist of the sound of natural bells or chimes, an “electronically created” audio sequence, or a voice message. By using the common WAV file format, the desired audio sources can be created outside of the Model 352A and then easily loaded into the unit.

Creating Preamble Audio Files

Audio content can be captured or created using standard audio techniques. Natural sounds or voice messages can be recorded. Alternately, audio signals can be “synthesized” as desired. To prepare this audio content for loading into the Model 352A requires that they be in the 16-bit, monoaural, 48 kHz sample rate, WAV (.wav) format. For compatibility with the Model 352A, the names of the two preamble audio files must be **M352ATone1.wav** and **M352ATone2.wav**.

Studio Technologies has had good success using the open-source audio software from Audacity® to create compatible preamble audio files. It's available free of charge at audacityteam.org. However, many other compatible audio recording and editing programs are available for use with various personal computer operating systems.

It's expected that Studio Technologies will create a "library" of preamble audio files. These will be available for download, free of charge, to interested parties. Refer to the Studio Technologies' website for what files are currently available. If you create interesting WAV files for your application, we encourage you to share them with other Model 352A users. Please submit the files, along with a detailed description of their content, to the Studio Technologies' support email address. They'll be added to the website (studio-tech.com), making them easily accessible to others.

Loading Preamble Audio Files

The Model 352A has the ability to load installer-created WAV files into non-volatile memory by way of a standard USB flash drive. The Model 352A implements a USB host function and provides access by way of a type A receptacle located on the unit's back panel. The Model 352A updates its preamble audio files using the names **M352ATone1.wav** and **M352ATone2.wav**.

The update process begins by preparing a USB flash drive. The flash drive doesn't have to be empty (blank) but must be in the personal-computer-standard FAT32 format. One or both of the preamble audio files can be automatically loaded into the Model 352A at the same time. In the flash drive's root directory, save the desired new firmware file(s), ensuring that the required name(s) are specified. The file name for preamble audio file 1 must be **M352ATone1.wav**. The file name for preamble audio file 2 must be **M352ATone2.wav**. After copying files to the USB flash drive, be certain to use the OS system's eject command to ensure that they are correctly stored.

Once the USB flash drive is inserted into the Model 352A's USB receptacle, located on the unit's back panel, the unit must be powered off and again powered on. At this point, the file(s) will automatically load. To install either or both preamble audio files follow these steps:

1. Remove power from the Model 352A. This will entail removing the PoE Ethernet connection from the etherCON RJ45 jack that's located on the unit's back panel.
2. Locate the USB receptacle, labeled WAV Audio Files and Firmware Update, on the Model 352A's back panel. Directly adjacent to the USB receptacle is a small hole that provides visual access to a green LED indicator.
3. Insert the prepared USB flash drive into the USB receptacle.
4. Apply Power-over-Ethernet (PoE) power to the Model 352A by connecting the Ethernet interface cable to the unit's RJ45 jack.
5. After a few seconds, the Model 352A will run a "boot loader" program that will automatically load and save the new preamble audio file(s) that are present on the USB flash drive. The update process can range from approximately 5 seconds to approximately 45 seconds. The actual time will depend on the file's size (up to 40 seconds of audio playback) and number of WAV files (one or two) that are being loaded. While the file(s) are being loaded the green LED, located adjacent to the USB receptacle, will flash slowly. The unit's two talk pushbutton switches (located on the front panel) will indicate the status of the loading process. They will flash orange when the loading processing is taking place. They will light green if the one or two preamble audio files were successfully loaded. They will light red if the loading process was not successful. Once the file-loading process has completed the Model 352A will restart. For details regarding the manner in which the talk button LEDs will light refer to the Operation section of this guide.
6. At this time, the Model 352A will be functioning with the newly loaded preamble audio file(s). The USB flash drive can now be removed. But to be conservative, first remove the PoE Ethernet connection, then remove the USB flash drive, and then reconnect the PoE Ethernet connection.
7. Confirm that the desired preamble audio file(s) have been loaded into the Model 352A. This will typically require listening to one or two of the Dante transmitter (output) audio channels. The actual channels that utilize the preamble files will depend on how the Model 352A has been configured using the STcontroller application.

Note that upon power being applied to the Model 352A if the USB flash drive doesn't contain compatible preamble audio file(s) in its root folder no harm will occur. Upon power up the green LED, located adjacent to USB receptacle, will flash on and off rapidly for a few seconds to indicate that no valid files have not been found. Once that has completed then normal operation using the unit's existing preamble audio files will begin.

Operation

At this point, all connections and configuration steps should have been completed and everything should be ready for Model 352A operation to commence. The unit should have been placed at the desired physical location. In most cases, a gooseneck microphone should have been installed. If desired, the analog monitor output should have been connected to the analog input of an amplified loudspeaker or a related audio device. An Ethernet connection with Power-over-Ethernet (PoE) capability should have been made to the unit's etherCON RJ45 jack.

The Model 352A's Dante configuration settings should have been selected using the Dante Controller software application. In this way, the unit's three Dante transmitter (output) channels and four Dante receiver (input) channels should have been routed, by way of Dante "subscriptions," to the desired receiver and transmitter channels on associated Dante-enabled equipment. Using the Studio Technologies' STcontroller software application the unit's configuration should have been selected to meet the needs of the specific application. If desired, one or two custom preamble audio files should have been created and loaded into the Model 352A.

Initial Operation

The Model 352A will begin to function as soon as a Power-over-Ethernet (PoE) power source is connected. However, it will typically take 20 to 30 seconds for full operation to commence. Upon initial power up the three status LEDs, located on the back panel below the etherCON RJ45 jack, will begin to light as LAN and Dante connections are established. The microphone compressor LED (labeled Mic Comp), also located on the back panel, may momentarily flash orange. The green firmware update LED, located on the back panel adjacent to the USB receptacle, will slowly flash approximately five times as the internal processor becomes active.

The red and green LEDs within the two talk pushbutton switches will light in a short test sequence to indicate that they are functioning correctly and the application firmware (embedded software) has started. Then the two talk pushbutton switches will light sequentially to indicate that the unit is ready to load new preamble files and display their loading status. These files would be presented to the unit by way of WAV files on an attached USB flash drive. Talk button 1 is associated with preamble file 1. It will slowly flash orange three times and then light green if a new file 1 has been loaded or light red if a new file 1 was not loaded. The LED associated with talk button 1 will then remain lit and talk button 2 will indicate the outcome of the unit's attempt at loading a new preamble file 2. Talk button 2 will flash orange three times to indicate that the loading process is pending. The button will then light red if no file 2 was loaded or light green if a new file was loaded. After a brief pause, the LEDs in the talk buttons will stop lighting.

Note that in most power-up sequences, new preamble audio files will not be loaded. The talk button LEDs are simply used to display the status of the loading process. Their flashing orange and then lighting red doesn't indicate a problem. It just indicates that the process was available but was not required.

Once the entire start-up sequence has completed and the Dante connection has been established, full operation will begin. The various LEDs will then become operational, displaying the status of their designated functions.

How to Identify a Specific Model 352A

Functions within the Dante Controller and STcontroller software applications allow a specific Model 352A unit to be identified. Each application provides an "eyeball" icon that when clicked will activate the Identify function. When this function is selected, a command will be sent to a specific Model 352A unit. On that unit the red LEDs associated with the two talk pushbutton switches will flash three times (but the actual on/off status of the buttons will not change). In addition, the Sys and Sync status LEDs, located directly below the etherCON RJ45 jack on the unit's back panel, will slowly flash four times. After a few seconds, the LED identification pattern will cease and normal Model 352A talk pushbutton switch LED and Dante status LED operation will resume.

Ethernet and Dante Status LEDs

As previously discussed, there are three status LEDs located below the etherCON RJ45 jack on the Model 352A's back panel. The Link Act LED will light green whenever an active connection to a 100 Mb/s Ethernet network has been established. It will then flash in response to all Ethernet data packet activity. The Sys and Sync LEDs display the operating status of the Dante interface and its associated network activity. The Sys LED will light red during Model 352A power up to indicate that the Dante interface is not ready. After a short interval it will light green to indicate that it is ready to pass data with another Dante device. The Sync LED will light red when the Model 352A is not synchronized with a Dante network. It will light green when the unit is synchronized with a Dante network and an external clock source (timing reference or Leader clock) is being received. It will slowly flash green when this specific Model 352A is part of a Dante network and is serving as the Leader clock. (This is possible but is not the normal operating condition.) It's possible that up to 30 seconds may be required for the Sync LED to reach its final state.

Compressor Active LED and Microphone Preamp Gain

An orange LED is located between the USB receptacle and the analog monitor output connector on the Model 352A's back panel. It is labeled Mic Comp and displays the status of the microphone audio compressor function. This function controls the dynamic range of the gooseneck microphone audio signal before it is sent out the Dante transmitter (output) channels. The microphone compressor LED will light whenever the input level from the microphone, along with the configured microphone preamplifier gain, is such that the dynamic range of the signal is being actively controlled. It's perfectly acceptable for the Mic Comp LED to light intermittently whenever a user is talking into the gooseneck microphone at a normal voice level. However, if the Mic Comp LED lights solid while a user is talking at a normal voice level this will typically indicate that the microphone preamplifier gain setting should be reduced. (The STcontroller software application would be used to configure the gain.) Conversely, if the Mic Comp LED almost never lights when normal talking is taking place it's possible that changing the preamplifier gain to a higher value

would be beneficial. Note that due to the design of the circuitry the microphone compressor active LED will function whether or not either or both of the talk functions is active.

Pushbutton Switches

Two pushbutton switches are used to select how the preamble and microphone audio signals are routed to two Dante transmitter (output) channels. How the buttons function and what LED color and action is associated with them will depend on the configuration choices that have been made using the STcontroller application. When the function associated with a button is inactive (off) the pushbutton switch's LED can be lit red or green, or not be lit at all. When the function is active (on) the pushbutton switch's LED will be lit orange, red, or green.

Pushbutton Switch Modes

There are four ways that the pushbutton switches will respond to being pressed. The specific way each operates will depend on its selected mode configuration.

Momentary: If this mode is selected, the function will become active whenever the pushbutton switch is pressed and held.

Tap to Latch: If this mode is selected, whenever the pushbutton switch is pressed ("tapped") the function will alternate between its active and inactive states. Upon Model 352A power up the function will be in its inactive state.

Momentary/Tap to Latch: This mode is a combination of the Momentary and Tap to Latch modes. It's similar to the way in which talk pushbutton switches function on user stations associated with broadcast or production intercom systems. If the pushbutton switch is pressed and held the function will become active and will remain so until the pushbutton switch is released. If the pushbutton switch is momentarily pressed ("tapped") the function will change state. Upon Model 352A power up the function will be in its inactive state.

Disabled: This mode is selected only if the function is not going to be utilized. In this mode, pressing the pushbutton switch will simply result in the button's red LEDs momentarily flashing.

Button Functions

The function associated with each pushbutton switch and its associated Dante transmitter (output) channel can be configured from among seven choices. The STcontroller software application is used to select the mode for each.

Mic Audio Only: When this mode is selected, the pushbutton switch will cause audio from the connected microphone to be sent to the associated Dante transmitter (output) channel.

Preamble Audio (Play Once), then Mic Audio: When this mode is selected, the pushbutton switch will cause the selected preamble audio file to be sent (“played”) once to the associated Dante transmitter (output) channel after which the microphone audio will be sent (connected) to the associated Dante transmitter (output) channel.

Preamble Audio (Play Once), Mix with Mic Audio: When this mode is selected, the pushbutton switch will cause the selected preamble audio file to be sent (“played”) once to the associated Dante transmitter (output) channel. At the same time that the preamble starts to play the microphone audio will also be sent (connected) to the associated Dante transmitter (output) channel. The preamble audio will be mixed (summed or combined) with the microphone audio.

Preamble Audio Only (Play Once, Interruptible): When this mode is selected, the pushbutton switch will cause the selected preamble audio file to be sent (“played”) once to the associated Dante transmitter (output) channel. The pushbutton switch can be used to terminate (interrupt or stop) the playing of the preamble audio file. In this way, it’s possible to have the preamble audio file only partially play before being stopped by operation of the pushbutton switch.

Preamble Audio Only (Play Once, Complete): When this mode is selected, the pushbutton switch will cause the selected preamble audio file to be sent (“played”) once to the associated Dante transmitter (output) channel. The pushbutton switch cannot be used to terminate (interrupt or stop) the playing of the preamble audio file. The preamble will always play completely once. It won’t be possible to have the preamble audio file only partially play before being stopped by operation of the pushbutton switch.

Preamble Audio Only (Play Continuous, Interruptible): When this mode is selected, the pushbutton switch will cause the selected preamble audio file to be sent (“played”) continually to the associated Dante transmitter (output) channel. The pushbutton switch can be used to terminate (interrupt or stop) the playing of the preamble audio file. In this way, it’s possible to have the preamble audio file play partially before being stopped by operation of the pushbutton switch.

Preamble Audio Only (Play Continuous, Complete): When this mode is selected, the pushbutton switch will cause the selected preamble audio file to be sent (“played”) continually to the associated Dante transmitter (output) channel. The pushbutton switch cannot be used to terminate (interrupt or stop) the playing of the preamble audio file until it has ended. The preamble will always play completely, at least once, after it has started. It isn’t possible for the preamble audio file to play partially before stopping.

Button LED Action

As previously discussed, how the two talk pushbutton switches’ function and what LED colors and actions are associated with them will depend on the Model 352A’s configuration. When the function associated with a button is inactive (off) the pushbutton switch’s LED can be lit red or green, or not be lit at all. When the function is active (on) the pushbutton switch’s LED will be lit green, red, or orange. When the function is active (on), a button lighting red or green would indicate that microphone audio is being sent out the associated Dante transmitter (output) channel. However, the button will light orange when preamble audio is playing and the microphone is not active. To clarify, if preamble audio and microphone audio are both active then the pushbutton switch will light red or green depending on the selected configuration. That condition is what the user should expect to observe when the microphone is active. A pushbutton switch lighting solid orange indicates that the preamble is actively playing, however there’s no risk of an audio signal present near the microphone being routed to the associated Dante transmitter (output) channel.

Each pushbutton switch can be configured to display when a high-frequency call or channel active audio signal is present in the associated Dante receiver (input) channel. If so configured, when a high-frequency signal is detected the LEDs in the associated talk pushbutton switch will flash orange. A related configuration

choice allows the action of the talk pushbutton switch to be disabled whenever a high-frequency signal is detected.

Preamble Audio Source

The Model 352A allows two separate audio files to be saved. These can be “played” following configuration choices made using the STcontroller software application. The content of the audio files can be created using standard personal computer audio editing software and would reflect the needs of a specific application. Whether or not either or both of the preamble audio files are utilized in a Model 352A unit is beyond the scope of this user guide. They are a resource that can be utilized if necessary to optimize support for an application.

Analog and Dante Monitor Outputs

A 3-pin male XLR connector is associated with the analog monitor output. It is located on the back of the Model 352A's enclosure. At the time of installation, it may have been connected to an analog input on an amplified loudspeaker or another piece of audio equipment. A Dante transmitter (output) channel is also provided as a digital monitor output. A momentary-action pushbutton switch and rotary control are associated with the monitor output function. The audio source and level control action for the analog and Dante monitor outputs will follow the same configuration.

A pushbutton switch, labeled Source, is located on the left side of the Model 352A's front panel. The action of this pushbutton switch will depend on the unit's configuration.

If the source for the monitor output is configured for *None* then pressing and holding the source button will cause normal talk button lighting to stop and neither of the talk buttons will light. This indicates that no source has been selected for the monitor function. Once the source button is no longer pressed, the two talk buttons will resume their normal operation.

If one of the Dante monitor receiver (inputs) is selected as the monitor source then pressing and holding the source button will cause normal talk button lighting action to stop and one of the talk buttons will light orange to indicate which specific channel has been selected. During this period, no action will occur if either of the talk buttons are pressed. Once the source

button is no longer pressed the two talk buttons will resume their normal operation.

If the monitor source has been configured for *Selectable* then pressing the source button will cause normal talk button lighting to stop and one of the two talk pushbuttons will light orange to indicate which source is currently selected. It's also possible that neither of the talk buttons will light which would indicate that no source is currently selected. The two talk buttons can be used to select the active source. While continuing to press the source button, momentarily pressing either talk button will select its associated Dante monitor receiver (input) channel to be the active monitor source. Momentarily pressing a lit talk button will cause that Dante receiver (input) channel to be de-selected and no monitor source will be active. Once the source button is no longer pressed the talk buttons will resume their normal operation.

A push-in/push-out rotary level control, labeled Level, is located on the right side of the Model 352A's front panel. A configuration setting determines if the level of the monitor output function can be adjusted using this control. This will apply to both to the analog and Dante monitor outputs. If the monitor output has been configured to be adjustable (“post” or after) the level control, then users can rotate the level control to adjust the level of the monitor outputs. If the monitor function has been configured to one of the two fixed (“pre” or before) modes, then turning the level control will not impact the level of the monitor outputs.

Technical Notes

IP Address Assignment

By default, the Model 352A's Dante-associated Ethernet interface will attempt to automatically obtain an IP address and associated settings using DHCP (Dynamic Host Configuration Protocol). If a DHCP server is not detected, an IP address will automatically be assigned using the link-local protocol. This protocol is known in the Microsoft® world as Automatic Private IP Addressing (APIPA). It is also sometimes referred to as auto-IP (PIPPA). Link-local will randomly assign a unique IP address in the IPv4 range of 169.254.0.1 to 169.254.255.254. In this way, multiple Dante-enabled devices can be connected together and automatically function, whether or not a DHCP server is active on the LAN. Even two Dante-enabled devices that are

directly interconnected using an RJ45 patch cord will, in most cases, correctly acquire IP addresses and be able to communicate with each other.

An exception does arise when trying to directly interconnect two Dante-enabled devices that use Ultimo integrated circuits to implement Dante. The Model 352A uses an UltimoX4 “chip” and, as such, a direct one-to-one interconnection between it and another Ultimo-based product would typically not be supported. An Ethernet switch linking these units would be required to successfully interconnect the two Ultimo-based devices. The technical reason that a switch is required relates to the need for a slight latency (delay) in the data flow; an Ethernet switch will provide this. This wouldn’t typically prove to be an issue as the Model 352A uses Power-over-Ethernet (PoE) to provide its operating power. As such, in most cases a PoE-enabled Ethernet switch would be utilized to support Model 352A units.

Using the Dante Controller software application, the Model 352A’s IP address and related network parameters can be set for a manual (fixed or static) configuration. While this is a more-involved process than simply letting DHCP or link-local “do their thing,” if fixed addressing is necessary then this capability is available. But in this case, it’s highly recommended that every unit be physically marked, e.g., directly using a permanent marker or “console tape,” with its specific static IP address. If knowledge of a Model 352A’s IP address has been misplaced there is no reset button or other method to easily restore the unit to its default IP setting.

In the unfortunate event that a Model 352A’s IP address is “lost,” the Address Resolution Protocol (ARP) networking command can be used to “probe” devices on a network for this information. For example, in Windows OS the **arp -a** command can be used to display a list of LAN information that includes MAC addresses and corresponding IP addresses. The simplest means of identifying an unknown IP address is to create a “mini” LAN with a small PoE-enabled Ethernet switch connecting a personal computer to the Model 352A. By using the appropriate ARP command the required “clues” can be obtained.

Optimizing Network Performance

For best Dante audio-over-Ethernet performance a network that supports VoIP QoS capability is

recommended. In applications that utilize multicast Ethernet traffic enabling IGMP snooping can be valuable. (Ensure that support for PTP timing messages is maintained.) These protocols can be implemented on virtually all contemporary managed Ethernet switches. There are even specialized switches that are optimized for entertainment-associated applications. Refer to the Audinate website (audinate.com) for details on optimizing networks for Dante applications.

Application Firmware Version Display

A selection in the STcontroller software application allows the Model 352A’s application firmware version to be identified. This can be useful when working with factory personnel on application support and troubleshooting. To identify the firmware version, begin by connecting the Model 352A unit to the network (via Ethernet with PoE) and wait until the unit starts to function. Then, after starting STcontroller, review the list of identified devices and select the specific Model 352A for which you want to determine its application firmware version. Select **Version and Information** under the **Device** tab. A page will display that provides a lot of useful information, including the application firmware version and well as details on the Dante interface firmware.

Application Firmware Update Procedure

It’s possible that updated versions of the application firmware (embedded software) that is utilized by the Model 352A’s microcontroller (MCU) integrated circuit will be released to add features or correct issues. Refer to the Studio Technologies’ website for the latest application firmware file. The unit has the ability to load a revised file into its MCU’s non-volatile memory by way of a USB flash drive. The Model 352A implements a USB host function that directly supports connection of a USB flash drive. The Model 352A’s MCU updates its application firmware using a file named **M352AXvXX.stm** where Xs are decimal digits that represent the version number.

The update process begins by preparing a USB flash drive. The flash drive doesn’t have to be empty (blank) but must be in the personal-computer-standard FAT32 format. The processor in the Model 352A is compatible with USB 2.0, USB 3.0, and USB 3.1-compliant flash drives. Save the new firmware file in the root

folder with a name of **M352AvXrXX.stm** where XrXX is the actual version number. Studio Technologies will supply the application firmware file inside a .zip archive file. While the firmware file inside of the zip file will adhere to the naming convention required by the Model 352A, the name of the zip file itself will include the file's version number.

Once the USB flash drive is inserted into the USB host interface, by way of the type A receptacle that is located on the back panel of the Model 352A, the unit must be powered off and again powered on. At this point, the file from the USB flash drive will automatically load. To install the application firmware file, follow these steps:

1. Disconnect power from the Model 352A. This will entail removing the Ethernet connection that is made to the etherCON RJ45 jack.
2. Locate the USB type A receptacle on the back of the unit. Insert the prepared USB flash drive into it.
3. Apply power to the Model 352A by connecting an Ethernet signal that has Power-over-Ethernet (PoE) present on it.
4. After a few seconds the Model 352A will run a "boot loader" program that will automatically load the new application firmware file (**M352AvXrXX.stm**). This loading process will take only a few seconds. During this time period the green LED that's located adjacent to the USB receptacle will flash slowly. Once the entire loading process has completed, taking approximately 10 seconds, the Model 352A will restart using the newly loaded application firmware.
5. At this time, the Model 352A is functioning with the newly loaded application firmware and the USB flash drive can be removed. To be conservative, remove the PoE Ethernet connection first then remove the USB flash drive. Re-connect the Ethernet signal to restart the unit.
6. Using STcontroller, confirm that the desired application firmware version has been correctly loaded.

Note that upon power being applied to the Model 352A if a connected USB flash drive doesn't have the correct file (**M352AvXrXX.stm**) in its root folder no harm will occur. Upon power up the adjacent green LED will flash on and off rapidly for a few seconds to indicate this condition and then normal operation using the unit's existing application firmware will begin.

Ultimo Firmware Update

As previously discussed, the Model 352A implements its Dante connectivity using the UltimoX4 integrated circuit from Audinate. The Dante Controller software application can be used to determine the version of the firmware (embedded software) that resides in this integrated circuit. The firmware (embedded software) residing in the UltimoX4 can be updated using the Model 352A's Ethernet port. Performing the update process is easily accomplished using an automated method called Dante Updater that's included as part of the Dante Controller application. This application is available, free of charge, from the Audinate website (audinate.com) The latest Model 352A firmware file, with a name in the form of **M352AvXrXrX.dnt**, is always available on the Studio Technologies' website, as well as being part of Audinate's product library database. The latter allows the Dante Updater software application that is included with Dante Controller to automatically query and, if required, update the Model 352A's Dante interface.

Restoring Factory Defaults

A command in the STcontroller software application allows the Model 352A's defaults to be reset to the factory values. From STcontroller select the Model 352A for which you want to restore its defaults. Select the **Device** tab and then the **Factory Defaults** selection. Then click on the **OK** box. Refer to Appendix A for a list of the Model 352A's factory defaults.

Note that restoring the factory defaults will not alter the two stored preamble audio files.

Specifications

Applications: Dante-based voice paging, intercom, talent cue (broadcast IFB), and general audio installations

Power Source: Power-over-Ethernet (PoE), class 1 (very low power, ≤ 3.84 watts), per IEEE 802.3af

General Audio:

Internal Digital Audio Processing: 32-bit, fixed

Nominal Digital Input and Output Level: -20 dBFS

Network Audio Technology:

Type: Dante audio-over-Ethernet

AES67-2018 Support: yes

Dante Domain Manager™ (DDM) Support: yes

Bit Depth: 16, 24, or 32

Sample Rate: 48 kHz

Number of Transmitter (Output) Channels: 3

Number of Receiver (Input) Channels: 4

Dante Audio Flows: 4; 2 transmitter, 2 receiver

Network Interface:

Type: 100BASE-TX, twisted-pair Ethernet with Power-over-Ethernet (PoE) supported

Data Rate: 100 Mb/s (10 Mb/s and 1000 Mb/s GigE Ethernet not supported)

Microphone Input:

Compatibility: Studio Technologies' GME-3-12 Gooseneck Microphone or equivalent

Microphone Power: 3.3 volts DC via 2.49 k resistor

Impedance: 2.0 k ohms, nominal

Gain: 12, 18, 24, 30, 36 dB, selectable

Frequency Response: -3 dB at 40 Hz, -1 dB at 16 kHz

Distortion (THD+N): 0.022%, measured at -20 dBFS, 22 Hz to 22 kHz bandwidth, 12 dB of gain

Noise Floor: -95 dBFS, A-weighted, 12 dB of gain

Dynamic Range: >76 dB, A-weighted, measured at 36 dB of gain

Compressor:

Application: applies only to gooseneck microphone audio

Threshold: 2.7 dB above nominal Dante output level (-17.3 dBFS), ± 0.3 dB

Slope: 2:1

Status LED: compressor active

Preamble Audio:

Number of Channels: 2, field updatable using USB flash drive

Source Type: 16-bit monophonic, 48 kHz sample rate, WAV (.wav) files, stored in non-volatile memory

Level: -20 dBFS nominal, adjustable ± 12 dB in 3-dB steps

Duration: up to 40 seconds per WAV file

Distortion: $<0.0001\%$

Frequency Response: 20 Hz to 20 kHz, $+0/-0.7$ dB

Background Music or Talent Cue (Broadcast IFB) Capability:

Number of Channels: 1 or 2, configurable

Audio Sources: two Dante receiver (input) channels

Frequency Response: 20 Hz to 20 kHz, $+0/-0.7$ dB

Program Audio Attenuation (Dim): 0, 5, 10, 15, 20 dB, Full Mute, configurable

Dante Talk Outputs: 2

Type: Dante digital

Nominal Level: -20 dBFS

Analog Monitor Output:

Type: electronically balanced, capacitor coupled, intended to drive balanced or unbalanced loads of 2 k ohms or greater

Audio Source: two Dante receiver (input) channels, two preamble audio sources, and microphone audio, configurable and selectable

Source Impedance: 200 ohms

Nominal Level: -10 , 0, or $+4$ dBu, reference -20 dBFS, configurable

Maximum Level: $+20$ dBu, with 0 dBFS input, measured at 1 kHz

Dynamic Range: >106 dB, A-weighted

Distortion (THD+N): 0.0011% (-99 dB), measured at -1 dBFS input, 22 kHz bandwidth

Frequency Response: $+0/-1.5$ dB, 20 Hz to 20 kHz

Level Reduction (Dim) Capability: 0, 5, 10, 15, 20 dB, or full mute, configurable

Dante Monitor Output:

Type: Dante digital

Audio Source: two Dante receiver (input) channels, two preamble audio sources, and microphone audio, configurable and selectable

Nominal Level: -30 , -24 , or -20 dBFS, reference -20 dBFS, configurable

Channel Status Signals:**Action:** independently configurable per channel**Send Tone Frequencies:** 16, 18, and 20 kHz, sine wave**Send Tone Frequency Accuracy:** <10 ppm**Send Tone Level:** -20 dBFS, nominal**Send Tone Distortion:** <0.0001%**Receiver Tone Detect Level Threshold:** -23 dBFS at 16 kHz; -28 dBFS at 18 kHz; -30 dBFS at 20 kHz**Receiver Tone Minimum On Time:** 80 milliseconds**Program Input-to-Monitor Output Low-Pass****Filter:** -6 dB at 10 kHz; -28 dB at 16 kHz; -55 dB at 20 kHz**Tone Detect Tone-to-Monitor Output Rejection****Filter:** -31 dB at 18 kHz; -46 dB at 20 kHz; -70 dB at 22 kHz**Connectors:****Gooseneck Microphone:** 3-conductor ¼-inch jack with 7/16-20 UNF threaded bushing; 4-40 hex head socket set screw allows microphone to be secured into bushing**Analog Monitor Output:** 3-pin male XLR**Ethernet:** Neutrik NE8FBH etherCON RJ45 jack (compatible with etherCON CAT5 plug)**USB:** type A receptacle (used only for updating WAV audio and firmware files)**Configuration:** Studio Technologies' STcontroller personal computer application**Software Updating:** USB flash drive used for updating main firmware and WAV audio files; Dante Controller's Dante Updater application used for updating Dante interface firmware**Environmental:****Operating Temperature:** 0 to 50 degrees C (32 to 122 degrees F)**Storage Temperature:** -40 to 70 degrees C (-40 to 158 degrees F)**Humidity:** 5 to 95%, non-condensing**Altitude:** not characterized**Dimensions:**

3.6 inches wide (9.1 cm)

2.7 inches high (6.9 cm)

4.7 inches deep (11.9 cm)

Deployment: intended for tabletop applications**Weight:** 1.1 pounds (0.50 kg) without gooseneck microphone; 1.4 pounds (0.64 kg) with GME-3-12 Gooseneck Microphone

Specifications and information contained in this User Guide subject to change without notice.

Appendix A—STcontroller Default Configuration Values

General Menu Page:

Microphone Input – Preamp Gain: 24 dB
System – Button LED Intensity: High
System – Button LED Action: Red when Off/Green when On
Monitor Output – Overall Level: Adjustable (Post-Fader)
Monitor Output – Audio Source: Selectable (Dante Receiver (Input) Channel 1)
Monitor Output – Dim when Preamble or Mic Active: 0 dB
Monitor Output – Preamble Audio Level: Off
Monitor Output – Microphone Audio Level: Off
Preamble Audio – File 1 Level Trim: 0 dB
Preamble Audio – File 2 Level Trim: 0 dB
Preamble Audio – Allow Update of Files: Yes

Channel Specific Menu Page (Identical for Channels 1-2):

Button Action: Tap to Latch
Button function: Mic Audio Only
Preamble Audio Source: File 1
Program Audio Source: None
Program Audio Dim: 15 dB
Channel Status Signal: None
Channel Receive Action: None

