



# Model 348 Intercom Station Example Screen Images

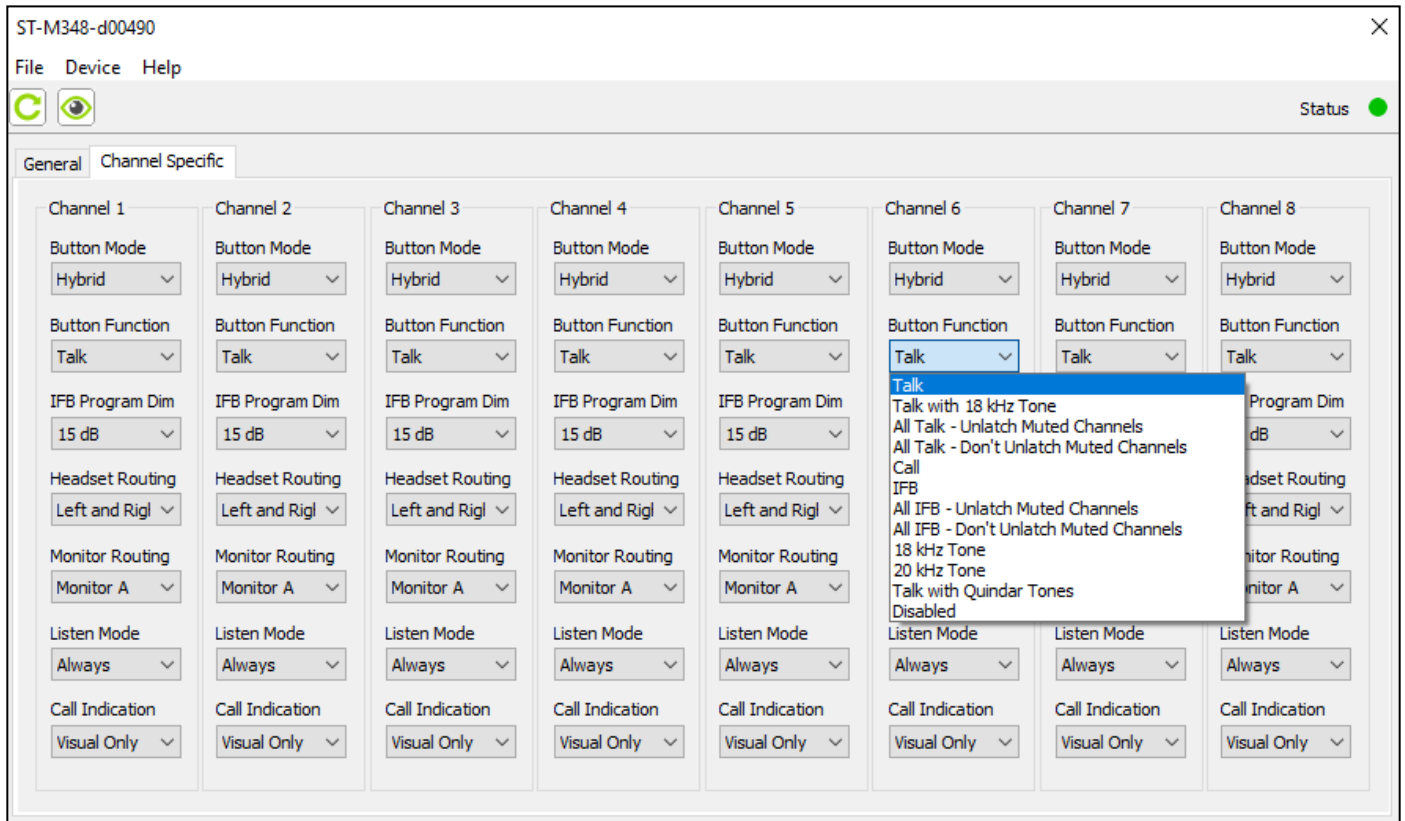
## STcontroller: Example General Menu Page

The screenshot shows the 'General' tab of the STcontroller interface. The window title is 'ST-M348-d00490'. The menu bar includes 'File', 'Device', and 'Help'. There are two status icons on the left (a green 'C' and a green eye) and a 'Status' indicator with a green dot on the right. The settings are organized into four main sections:

- Microphone Input:**
  - Source: Headset
  - Headset Mic Power: Off
  - Headset Mic Gain: 38 dB
  - Gooseneck Mic Gain: 24 dB
  - Dante Aux In Trim: 0 dB
  - Dante Aux In as Mic In Source: Disabled
- Headset:**
  - Sidetone Level: Medium
  - Dim: 0 dB
- Speaker:**
  - Source: Monitor A
  - Dim: 6 dB
- Dante Monitor Outputs:**
  - Mode: Off
  - Dim: 0 dB
- System:**
  - Level Control Position Display: On
  - Signal Present Display: On
  - LED Intensity and Action: High - Off when Inactive
  - Hot Mic: Off
  - Headset and Monitor Outputs Follow Mic Source: Off
  - Monitor A Call Tone Level: Off
  - Monitor B Call Tone Level: Off
  - Remote Control Input 1: Off
  - Remote Control Input 2: Off

# Model 348 Intercom Station Example Screen Images

## STcontroller: Example Channel Specific Menu Page



# Model 348 Intercom Station Example Screen Images

## Dante Controller: Example Routing Menu

The screenshot displays the Dante Controller software interface for configuring the routing of a Dante device (ST-M348-d00490). The interface is organized into several sections:

- Header:** The Dante logo is located in the top left corner.
- Filter Transmitters:** A text input field containing the number "348".
- Filter Receivers:** A text input field containing the number "348".
- Receivers (1):** A list of available receiver inputs for the device, each with a speaker icon:
  - Ch 1
  - Ch 2
  - Ch 3
  - Ch 4
  - Ch 5
  - Ch 6
  - Ch 7
  - Ch 8
  - IFB Pgm 1
  - IFB Pgm 2
  - IFB Pgm 3
  - IFB Pgm 4
  - IFB Pgm 5
  - IFB Pgm 6
  - IFB Pgm 7
  - Aux In
- Transmitters (1):** A vertical list of available transmitter outputs, each with a speaker icon:
  - Ch 1
  - Ch 2
  - Ch 3
  - Ch 4
  - Ch 5
  - Ch 6
  - Ch 7
  - Ch 8
  - Mon A
  - Mon B
  - Hot Mic
  - Tally Tone
- Routing Grid:** A large grid area on the right side of the interface where routing connections between the transmitter and receiver lists can be made.