

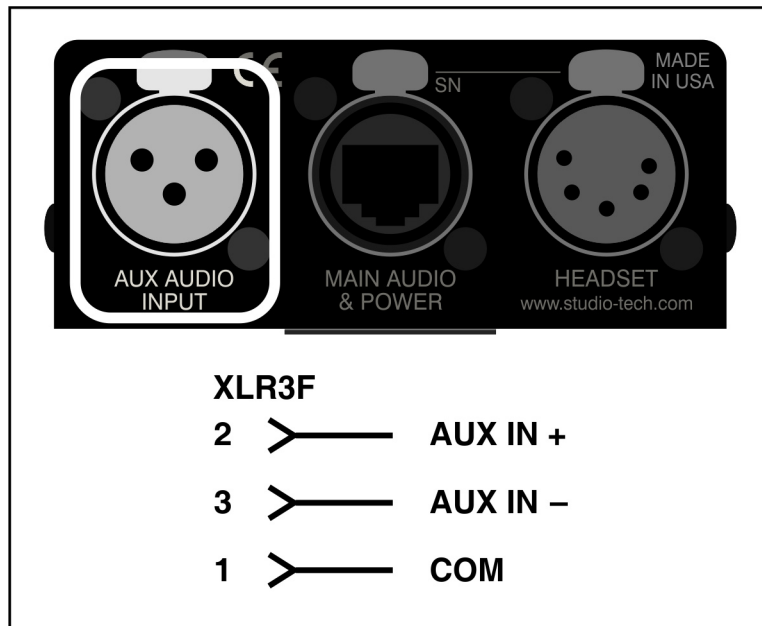


Connection Details for: Model 37 Intercom Beltpack



Model 37 Intercom Beltpack

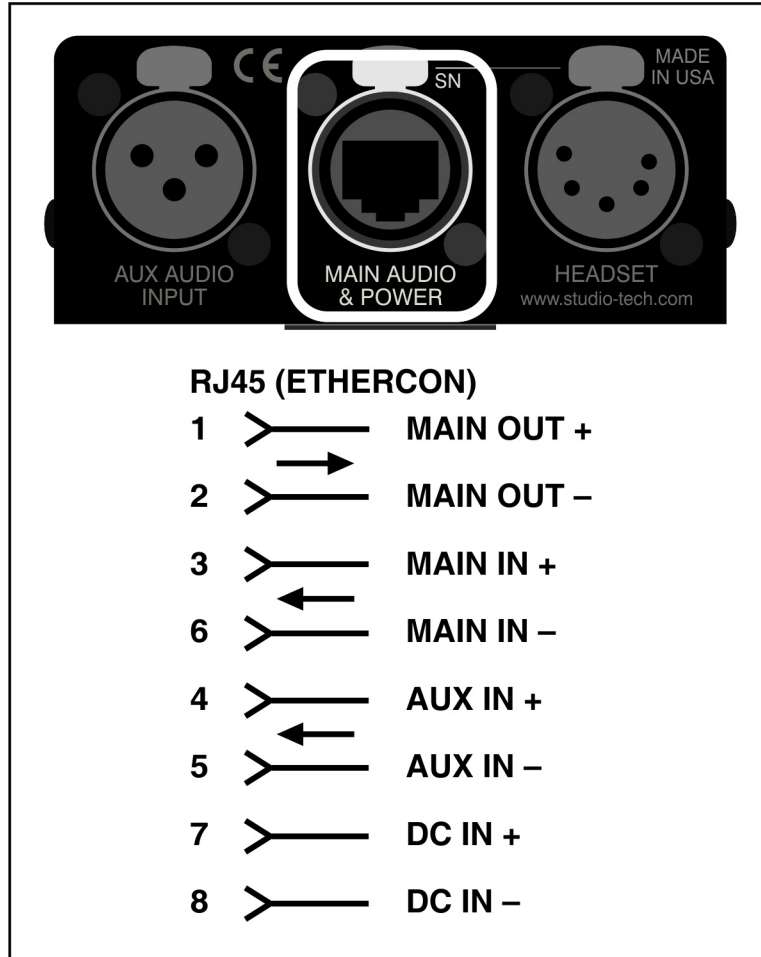
Aux Audio Input



Aux Audio Input

Model 37 Intercom Beltpack

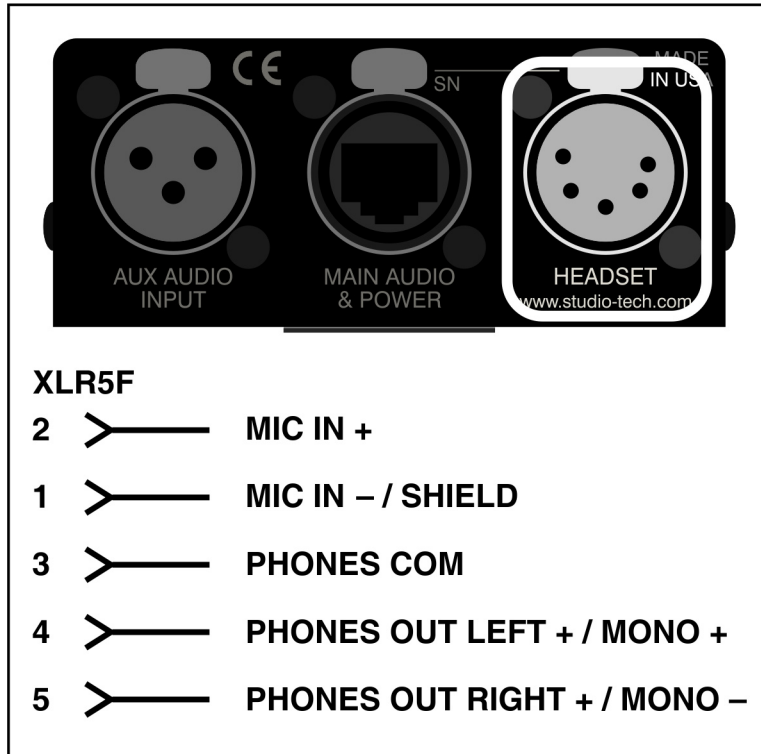
Main Audio, Aux Audio, and Power



Main Audio, Aux Audio, and Power

Model 37 Intercom Beltpack

Headset Connector



Headset Connector

Model 37 Intercom Beltpack

Headset Connector Wiring Suggestions

		BEYERDYNAMIC K109.00 HEADSET INTERFACE CABLE CONNECTIONS TO XLR5M CONNECTOR				
HEADSET TYPE	SCHEME	COM	LEFT	RIGHT	MIC +	MIC -
DT108 (SINGLE-EAR)	MONO	BR (4) TO 5	OR (3) TO 4	---	GR & YL (6) TO 2	SHLD (5) TO 1
DT109 (DUAL-EAR)	DUAL MONO	BL & BR (2, 4) TO 5	OR (3) TO 4	RD (1) TO 4	GR & YL (6) TO 2	SHLD (5) TO 1
DT109 (DUAL-EAR)	STEREO	BL & BR (2, 4) TO 3	OR (3) TO 4	RD (1) TO 5	GR & YL (6) TO 2	SHLD (5) TO 1

WIRE COLORS / IDENTIFICATION: () INDICATES BEYERDYNAMIC CABLE PIN NUMBER
 BL = BLUE RD = RED
 BR = BROWN YL = YELLOW
 GR = GREEN SHLD = SHIELD
 OR = ORANGE

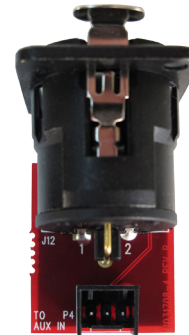
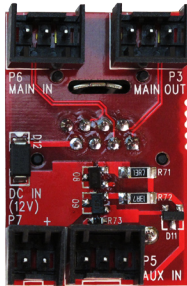
Termination of beyerdynamic Headset Interface Cable to XLR5M Connector

		HEADSET CONNECTIONS		
HEADSET TYPE	SCHEME	COM	LEFT	RIGHT
SINGLE-EAR	MONO	5	4	---
DUAL-EAR	DUAL MONO	5	4	4
DUAL-EAR	STEREO	3	4	5

Generic Headset Connection Chart –
 Termination to XLR5M Connector

Model 37 Intercom Beltpack

Ethercon® Interface Board and Aux Input Interface Board Connections



3-PIN HEADER

- 2 ← MAIN OUT +
- 3 ← MAIN OUT -
- 1 ← COM

Ethercon Interface Board – Main Audio Output

3-PIN HEADER

- 2 ← TO AUX IN +
- 3 ← TO AUX IN -
- 1 ← COM

Aux Input Interface Board – Aux Audio Output

3-PIN HEADER

- 2 ← MAIN IN +
- 3 ← MAIN IN -
- 1 ← COM

Ethercon Interface Board – Main Audio Input

The required mating receptacles are from the AMP MTA100 series of IDC (insulation displacement) connectors. Parts are available that are compatible with 22-28 AWG wire. The color of the receptacle indicates the intended wire gauge. The part number for the 3-terminal receptacle that is compatible with 24 AWG is AMP 3-643814-3. The part number for the 2-terminal receptacle that is compatible with 24 AWG is AMP 3-643814-2. These receptacles are white in color.

3-PIN HEADER

- 2 ← AUX IN +
- 3 ← AUX IN -
- 1 ← COM

Ethercon Interface Board – Aux Audio Input

For effective and reliable termination a semi-automatic termination tool is recommended. At Studio Technologies we get excellent results using the AMP 58074-1 handle assembly with associated die 58246-1. (For reference you'll find these items stocked by Digi-Key: www.digikkey.com.) This tool assembly will support 22-28 AWG and stranded wire should be used.

2-PIN HEADER

- 2 ← DC IN +
- 1 ← DC IN -

Ethercon Interface Board – DC Power Input